

FINANCING AD SYSTEMS

RENEWABLE ENERGY EDUCATION FIELD DAY

By

Bob Joblin



Big Sky West Dairy Digester

DF-AP #1, LLC, Located Near Gooding, ID

4,700-cow dairy

**Completed 1Q09-on
time & under budget**

1.2 MW Base Load

**Operating at 105% of
forecast; 98% up-time.**

20 Yr. PPA

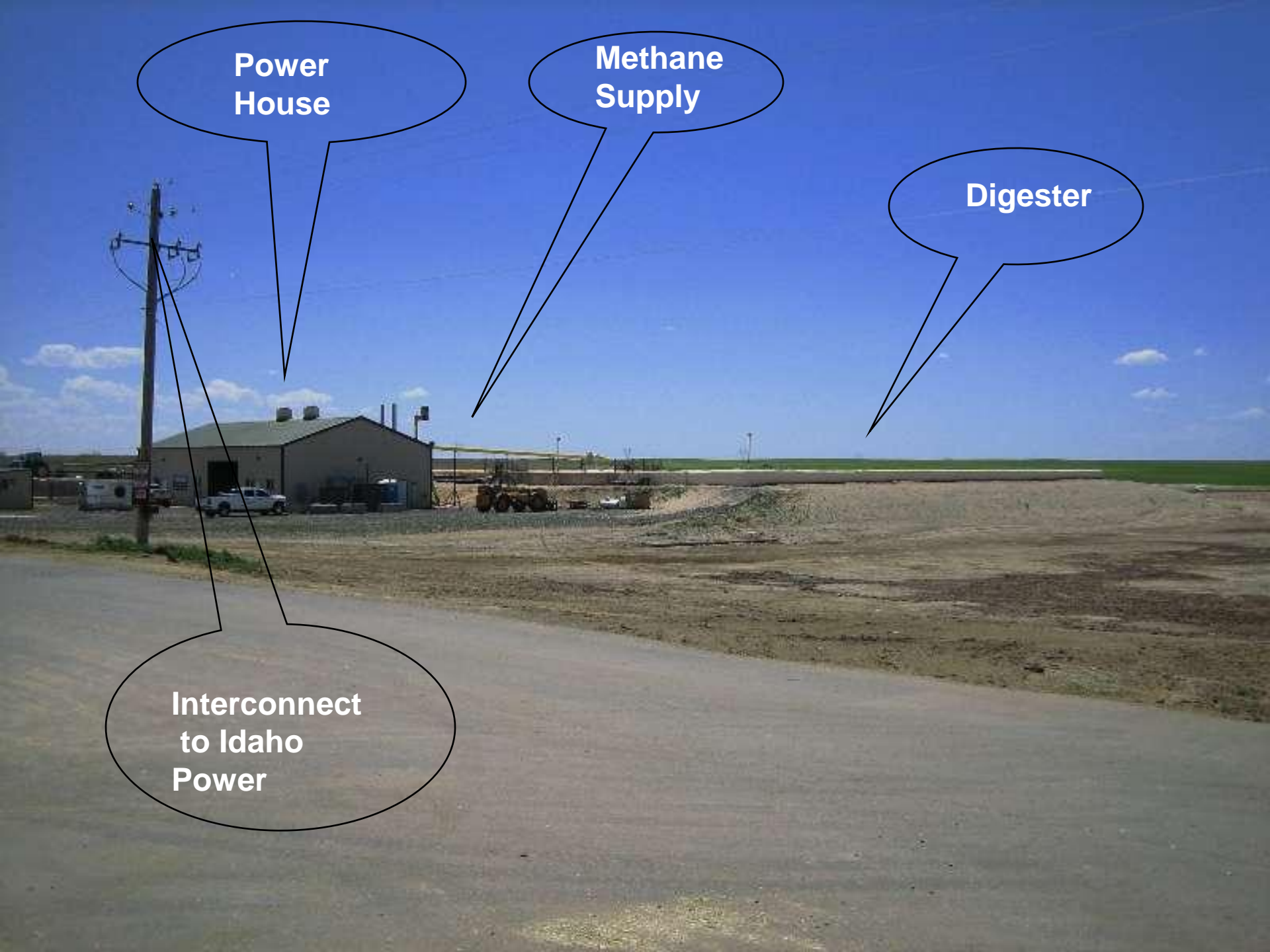


**Power
House**

**Methane
Supply**

Digester

**Interconnect
to Idaho
Power**



DOUBLE A DAIRY DIGESTER

AgPower Jerome, LLC, Located Near Jerome, ID

- 15,000-cow dairy
- First Power 12/22/11
- Approximately 4.2 MW- Continuous renewable energy to power 4,000 homes
- 20 Yr. PPA



Double A Gensets Delivered
September 2011- 1.5 MW each





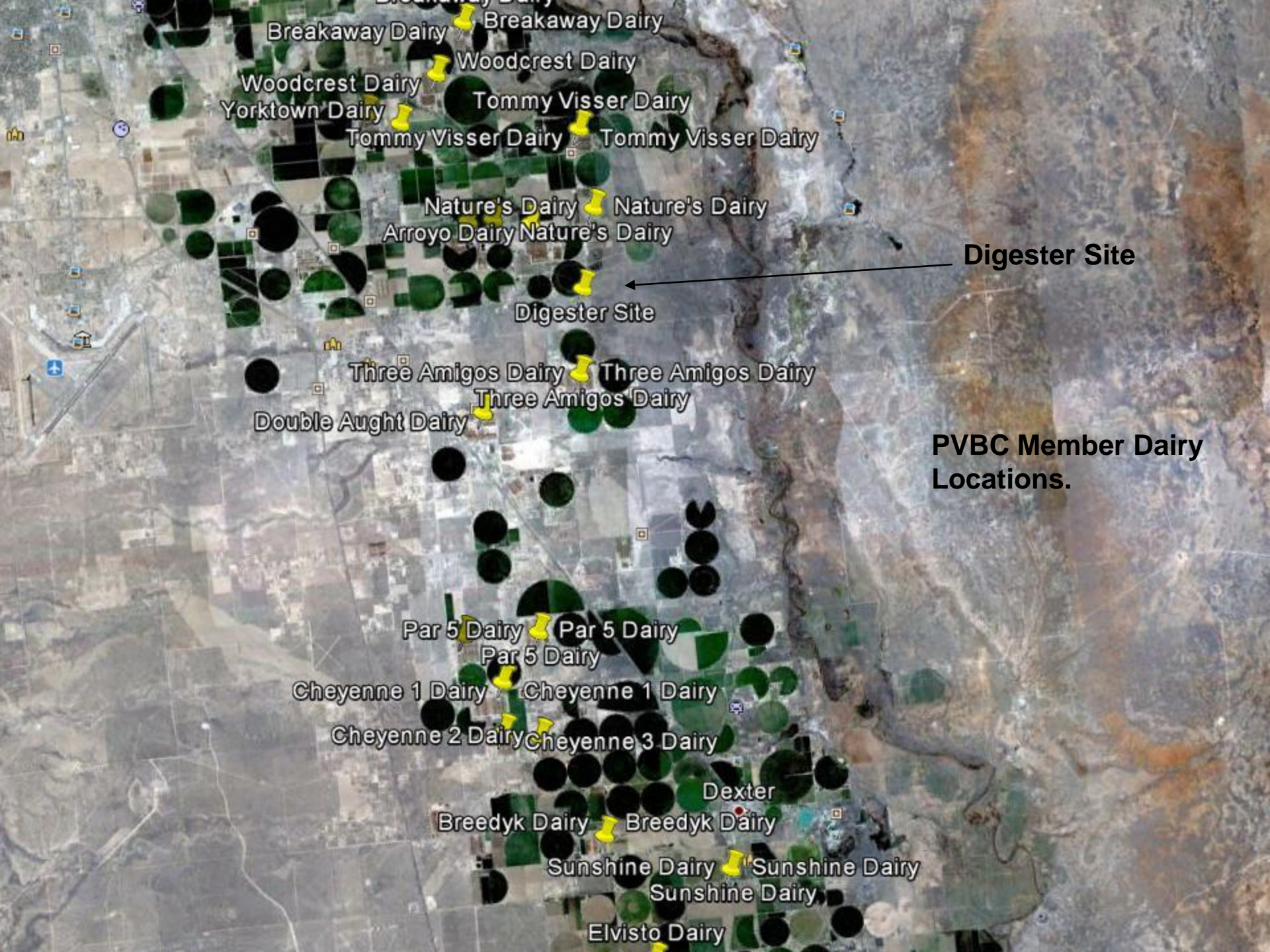
Double A Digester Gas Lines to Engine House & Engine Cooling Units-October 2011

PECOS VALLEY DIGESTER

Agpower FP#1, LLC, Located Near Roswell, NM

- Feedstock from 22 dairies
- Full power end of 3Q13
- Approximately 5 MW- Continuous renewable energy to power 5,000 homes
- 20 Yr. PPA





Breakaway Dairy Breakaway Dairy

Woodcrest Dairy

Woodcrest Dairy

Yorktown Dairy

Tommy Visser Dairy

Tommy Visser Dairy

Tommy Visser Dairy

Nature's Dairy

Nature's Dairy

Arroyo Dairy Nature's Dairy

Digester Site

Digester Site

Three Amigos Dairy

Three Amigos Dairy

Three Amigos Dairy

Double Aught Dairy

Par 5 Dairy

Par 5 Dairy

Par 5 Dairy

Cheyenne 1 Dairy

Cheyenne 1 Dairy

Cheyenne 2 Dairy

Cheyenne 3 Dairy

Dexter

Breedyk Dairy

Breedyk Dairy

Sunshine Dairy

Sunshine Dairy

Sunshine Dairy

Elvisto Dairy

PVBC Member Dairy Locations.



BOB JOBLIN

bob@agpowergroup.com

501.868.6400